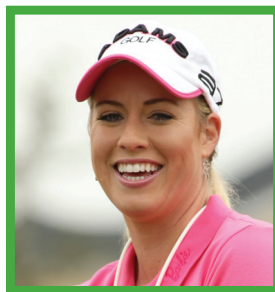


Please list your preferred partner(s) or foursome below. A team can be established if you do not already have four golfers. The winning team will have the opportunity to play with Brittany Lincicome in the 2012 annual Rotary Sour Mash Memorial Tournament. Winner's handicaps will be verified. There will be a limit of 120 players. Deadline to register is August 1, 2011.



**Golfer #1**                      **Handicap** \_\_\_\_\_

Name: \_\_\_\_\_

Address: \_\_\_\_\_

Phone: \_\_\_\_\_

Email: \_\_\_\_\_

**Golfer #2**                      **Handicap** \_\_\_\_\_

Name: \_\_\_\_\_

Address: \_\_\_\_\_

Phone: \_\_\_\_\_

Email: \_\_\_\_\_

**Golfer #3**                      **Handicap** \_\_\_\_\_

Name: \_\_\_\_\_

Address: \_\_\_\_\_

Phone: \_\_\_\_\_

Email: \_\_\_\_\_

**Golfer #4**                      **Handicap** \_\_\_\_\_

Name: \_\_\_\_\_

Address: \_\_\_\_\_

Phone: \_\_\_\_\_

Email: \_\_\_\_\_

\_\_\_\_\_ I can't attend, but will contribute.  
(any donation appreciated)

\_\_\_\_\_ I can't play, but will attend. (\$100 enclosed)

## BRITTANY LINCICOME

This year's tournament featured guest will be LPGA Tour Competitor, Brittany Lincicome. Brittany's father was born in Parkersburg and she has several relatives living in our area.

### PROFESSIONAL

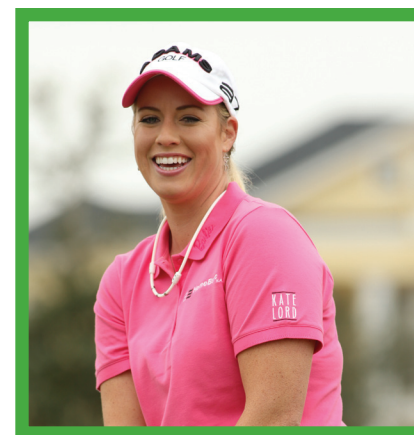
- Winner of 2011 ShopRite LPGA Classic
- 2009 Kraft Nabisco Championship, her first major tournament victory
- As of June 6, 2011, ranked 6<sup>th</sup> on the ADT LPGA Money List, \$398,024
- Member of 2009 Solheim Cup Team and currently ranks 6<sup>th</sup> in 2011 Solheim Cup points standings, 24<sup>th</sup> in the Rolex rankings
- Winner of 2007 Ginn Open
- Defeated Michele Redman, Brandie Burton, Kyeong Bae, Michele Wie, Lorena Ochoa, and Juli Inkster, to win the 2006 HSBC Women's World Match Play Championship and her first career victory
- Ranks 1<sup>st</sup> in driving distance in 2011 with 269 yards per drive and 2<sup>nd</sup> in Eagles, 6<sup>th</sup> in Birdies
- Career earnings on tour \$3,440,505

### PERSONAL

- Born in St. Petersburg, Florida on September 19, 1985.
- 5'10" Blonde Haired, Blue Eyed Professional, resides in Seminole, Florida.
- Started playing golf at 9 years old.
- Credits her parents Tom and Angie, and coach Matt Mitchell as the individuals most influencing her career.

For more information, visit [www.brittany1golf.com](http://www.brittany1golf.com)

40th Annual



Featuring  
**Winner of the 2011 ShopRite  
 LPGA Classic and  
 2009 Kraft Nabisco Champion  
 BRITTANY LINCICOME**

**August 15, 2011**

The 2011 Sour Mash Memorial Golf Tournament is presented by the Wood County Rotary Club and the Parkersburg Rotary Club.



**Honoree:  
Jim  
Winans**

James (Jim) F. Winans, Jr. was a longtime Parkersburg businessman and community supporter. He was born in Parkersburg on October 1, 1931. He was a graduate of Parkersburg High School, where he participated in basketball, track, baseball, football and wrestling, serving as captain of the 1st Big Red State Champion Wrestling Team in 1948. He then attended West Virginia University, where he participated in football and wrestling.

Jim was the founder and CEO of Winans Sanitary Supply beginning in 1959. What started as a small family business selling cleaning supplies is now a six-state corporation encompassing a broad spectrum of services. The corporation's staff has grown to include five of his nine children and more than 800 associates.

Jim was a member of Building Service Contractors International, where he served on the Board of Directors from 1984-1987 and also served as President of Building Service Contractors West Virginia from 1998-1999. He was named Entrepreneur of the Year in 1994 by the *West Virginia State Journal*. Jim was Commissioner of Wood County Pee Wee Football in 1961 and a high school and college basketball official from 1957-1967. He was also a member of St. Francis Xavier Catholic Church and the Knights of Columbus.

Jim was the father of nine children, two step children and twelve grandchildren. He and his wife Dinah were married for 25 years.

Jim believed that people could make a difference and that it was his obligation to give back to the communities that have made the Winans' many milestones possible. Through efforts, time and money, he was committed to contributing to the communities' social services, economic development, athletics, arts and educational programs.

# 40<sup>th</sup> Annual Rotary Sour Mash Memorial Tournament

When  
August 15, 2011

Where  
Parkersburg Country Club

Format  
"Play Your Own Ball"  
Team Event  
2 Best Net Balls of 4

Cost  
\$200 per player or \$750 per team

Entry Fee includes green fee, gift, clinic with Brittany Lincicome, continental breakfast, lunch, beverages, opportunity to observe Brittany and social time on the course, awards reception and chance to win prizes.

### Schedule of Event

- 9:00 a.m. Registration and Continental Breakfast
- 9:45 a.m. Clinic with Brittany Lincicome  
LPGA Tour Professional
- 10:30 a.m. Shotgun Start
- 11:00 a.m. Lunch Served at the Halfway House for  
- 1:00 p.m. Players and Sponsors
- 12:30 a.m. Featured Foursome Tees Off at #1Tee
- 2:00 p.m. Social Time On the Course
- 4:30 p.m. Awards Reception

## Sponsorships

### Tournament Sponsor - \$2,500

- Team Entry
- Photos with Brittany
- VIP Reserved Parking Tournament Day
- Sponsor Board Recognition
- Newspaper Recognition
- Two Tournament Prize Packages
- Four Event Tickets
- Table Tent Recognition

### Corporate Sponsor - \$750

- Sponsor Board Recognition
- Newspaper Recognition
- Two Tournament Prize Packages
- Four Event Tickets
- Table Tent Recognition

### Eagle Sponsor - \$400

- Sponsor Board Recognition
- Newspaper Recognition
- Two Tournament Prize Packages
- Two Event Tickets
- Table Tent Recognition

### Birdie Sponsor - \$250

- Sponsor Board Recognition
- Newspaper Recognition
- Tournament Prize Package
- One Event Ticket
- Table Tent Recognition

### Hole Sponsor - \$150

- Sign Recognition on Hole

**Name as you would like it on the sign:**

*For more information, contact  
Scott Davidson at the Parkersburg Country  
Club (304) 295-4841*

**Cut and mail this form with check to:**

**Sour Mash Memorial  
P.O. Box 5205  
Vienna, WV 26105**